



Dear Recipient,  
Here is your Weekly Report for Jersey Mikes Stores 50005, 50006, 50007.  
Report for Week: 10 of 2025

Overview

Year To Date Net Sales:  
Net Sales : \$776,640  
PY Sales: \$694,964  
Growth: 11.8%

Year To Date Same Store Sales:  
Net Sales: \$776,640  
PY Sales: \$694,964  
Growth: 11.8%

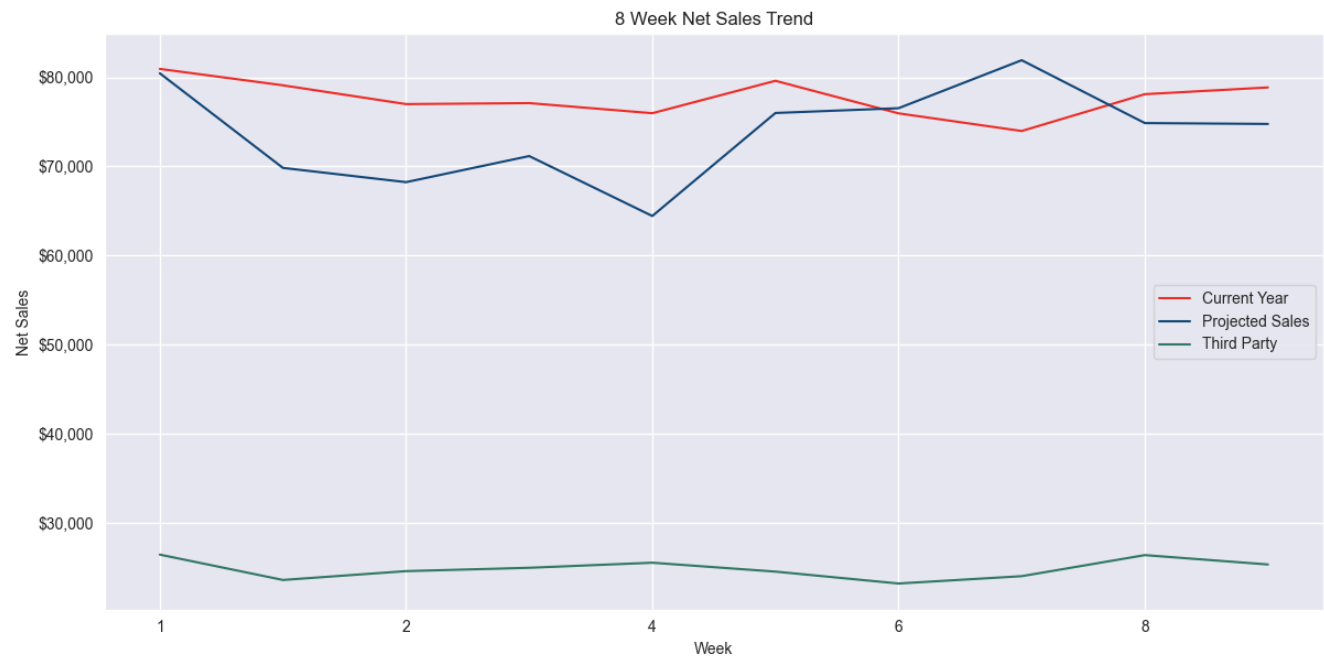
Weekly Net Sales:  
Net Sales : \$79,103.45  
Projected Sales : \$69,839  
3rd Party : \$23,614

Average Transaction Value: 20.76

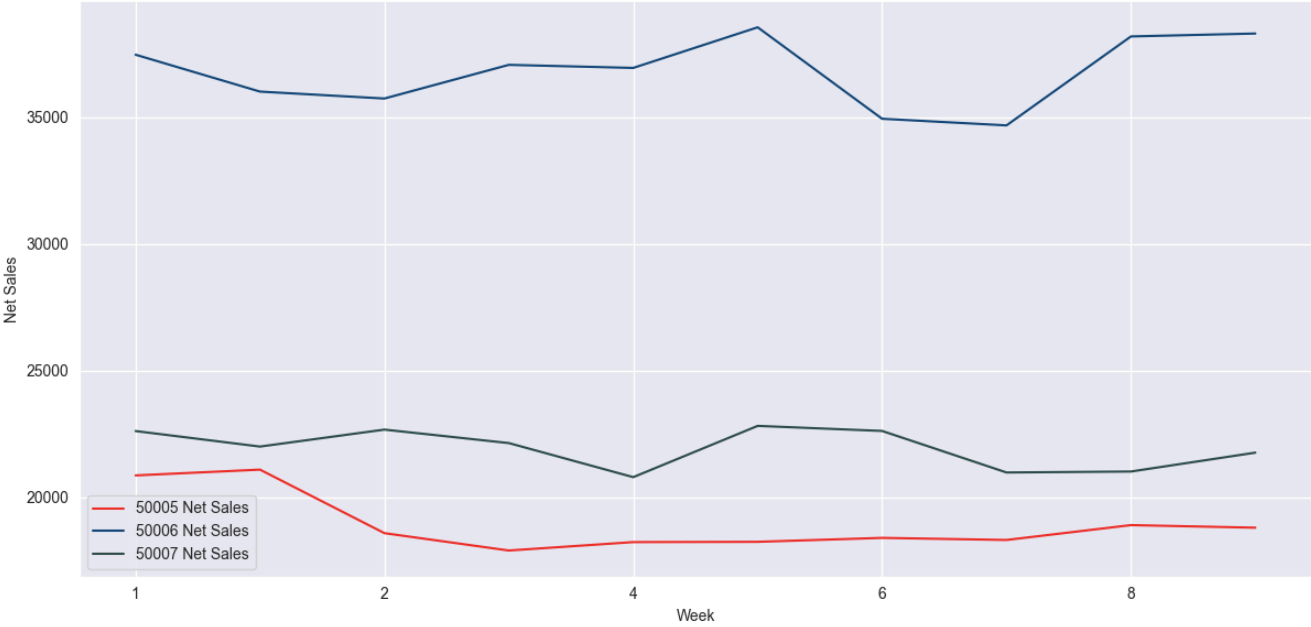
YTD Average Weekly Sales: \$77,664

Store Net Sales Average: \$26,368

Net Sales



Net Sales 8 Week Comparative Labor Trend



Weekly Net Sales Breakdown

Store Name	Site ID	Current Week	Projected Sales	Previous Week	Growth	Week Sales Rank CY	Alert
Hanover	50005	\$21,097	\$22,943	\$18,807	12.2%	1	
Constantia	50006	\$36,001	\$21,851	\$38,291	-6.0%		
Middletown	50007	\$22,006	\$25,045	\$21,767	1.1%		
Total		\$79,103	\$69,839	\$78,865	0.3%		

\* Alert if weekly growth is below -10%

\* Week Sales Rank CY returned if the Current Week Sales is in the top 3 of Sales for the year.

SSS YOY Table

Store Name	Site ID	Last Name	Current Week	PY Current Week	Weekly Growth	PY YTD Net Sales	CY YTD Net Sales	Yearly Growth	Alert
Hanover	50005	East	\$21,097	\$17,922	17.7%	\$162,255	\$189,403	16.7%	
Constantia	50006	East	\$36,001	\$33,813	6.5%	\$320,968	\$367,778	14.6%	
Middletown	50007	East	\$22,006	\$22,232	-1.0%	\$211,741	\$219,459	3.6%	
Total		East	\$79,103	\$73,967	6.9%	\$694,964	\$776,640	11.8%	

\* Only Sales from Stores with Past Year Sales are returned

\* Alert if YOY growth is below -10%

[Drill Into Details Here](#)

Weekly Average Net Sales / Transactions / Bread Stats

Site ID	Avg Weekend Net Sales	Avg Weekday Sales	Avg Lunch (9-3) Net Sales	Avg Close (3-9) Net Sales	Avg Lunch (9-3) %	Avg Close (3-9) %	Avg Weekend Bread Count	Avg Weekday Bread Count	Avg Lunch (9-3) Bread Count	Avg Close (3-9) Bread Count	Avg Weekend Transactions	Avg Weekday Transactions	Avg Lunch (9-3) Transactions	Avg Close (3-9) Transactions
50005	\$2,855	\$3,077	\$1,776	\$1,201	59.7%	40.3%	129	131	73	56	146	152	91	58
50006	\$5,089	\$5,164	\$2,614	\$2,528	50.8%	49.2%	175	200	95	97	222	243	120	116
50007	\$3,591	\$2,965	\$1,566	\$1,565	50.0%	50.0%	157	131	65	73	165	154	80	77
Total	\$3,845	\$3,736	\$1,985	\$1,765	52.9%	47.1%	154	154	78	75	178	183	97	84

Sales Type Breakdown

Store Name	Site ID	Walk In	Online Sales	3rd Party	Total Online
Hanover	50005	50.6%	32.2%	16.9%	49.1%
Constantia	50006	39.6%	11.3%	49.0%	60.2%
Middletown	50007	62.1%	26.9%	11.0%	37.9%
Total		48.8%	21.2%	29.9%	51.1%

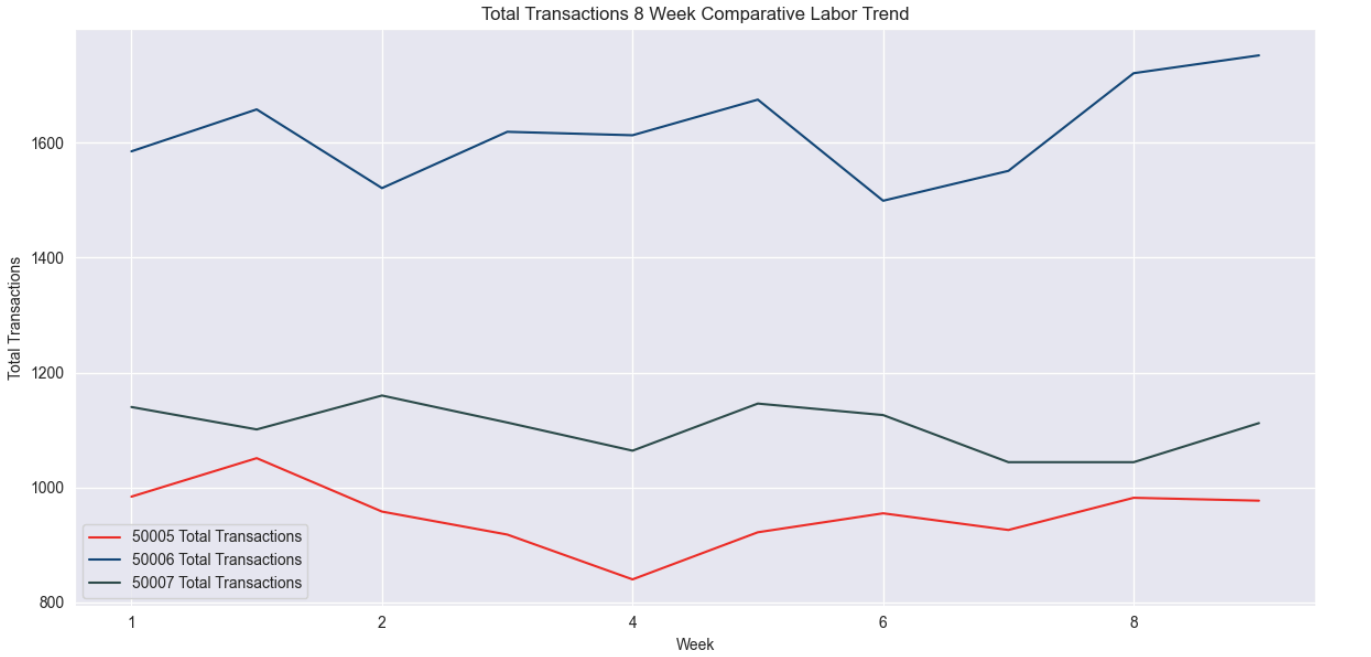
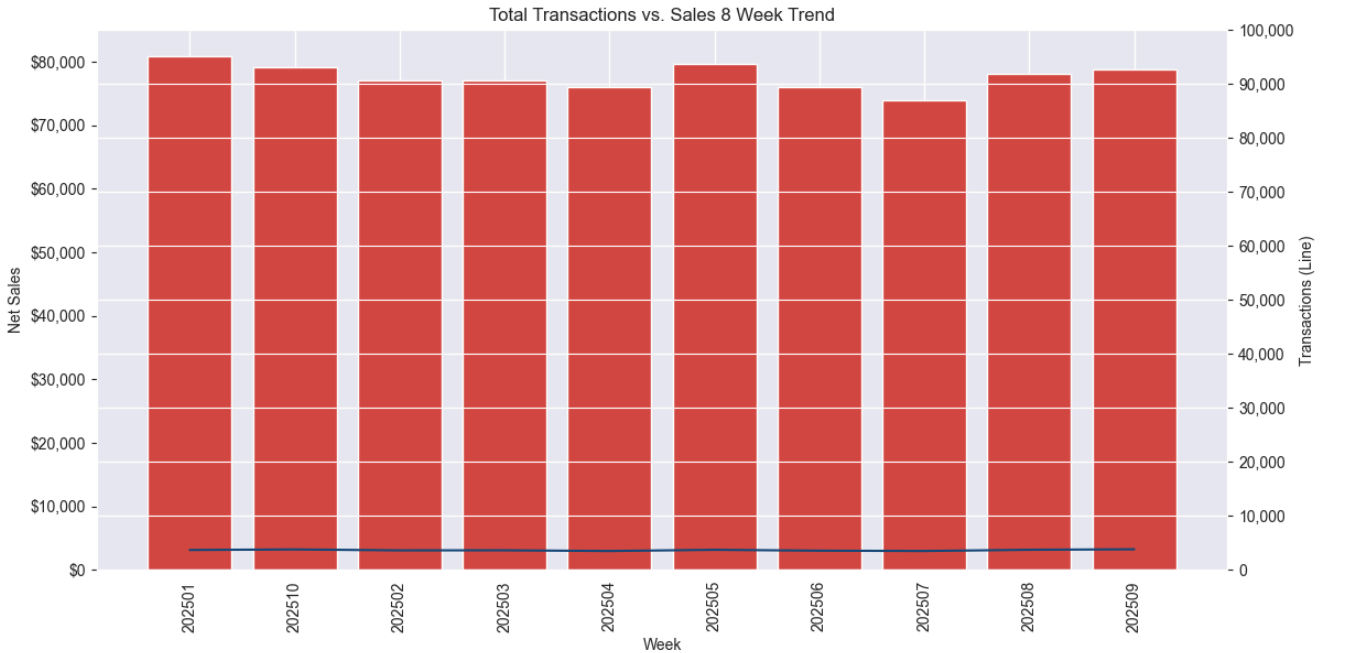
Excatcr Completed Orders

Site ID	Store Name	Last Name	Number of Orders	Net Sales
50005	Hanover	East	0	\$0.00
50006	Constantia	East	2	\$339.54
50007	Middletown	East	1	\$214.65
Total		East	3	\$554.18

Catering Sales

Site ID	Store Name	Last Name	Catering Tickets	Catering Sales	Catering %
50005	Hanover	East	3	\$341.82	1.6%
50006	Constantia	East	9	\$1,561.79	4.3%
50007	Middletown	East	7	\$1,990.52	9.1%
Total		East	19	\$3,894.13	4.9%

Transactions

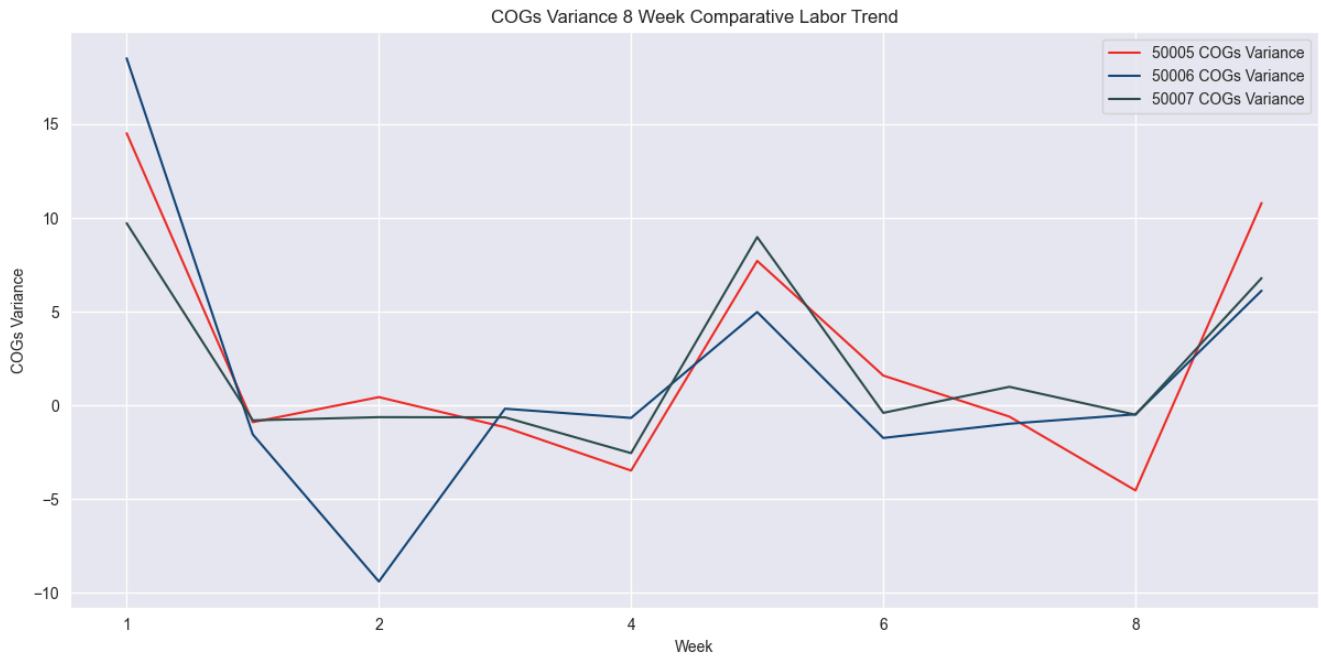
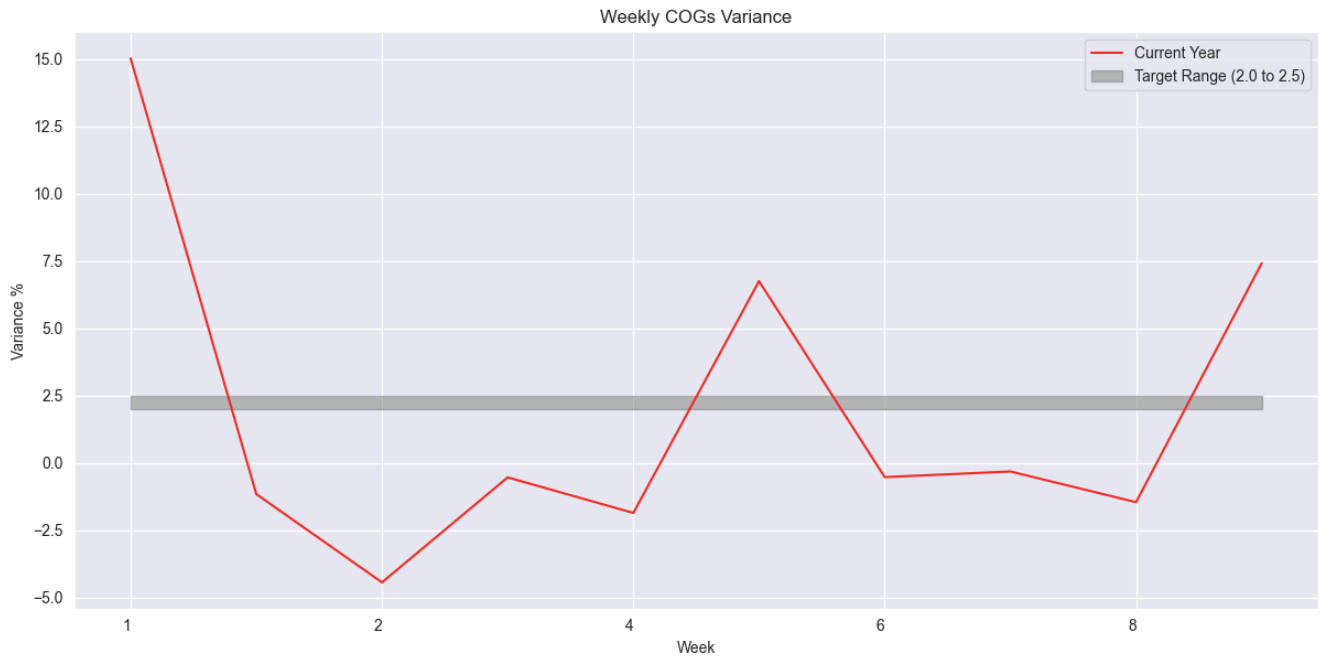


Weekly Transactions Breakdown

Store Name	Site ID	Current Week	Previous Week	Previous Year	YOY Growth %	Alert
Hanover	50005	1,051	977	909	15.6%	
Constantia	50006	1,658	1,752	1,509	9.9%	
Middletown	50007	1,101	1,112	1,231	-10.6%	ALERT
Total		3,810	3,841	3,649	4.4%	

\* Alert if weekly growth is below -10%

Cost Of Goods



#### Weekly COGs Breakdown

Store Name	Site ID	Discarded Bread	Non-Paper Actual %	Non-Paper Theoretical %	Non-Paper Variance %	Overall Actual %	Overall Theoretical %	Overall Variance %	Above	Below	NCD	Alert
Hanover	50005	579.7	31.41%	32.31%	-0.90%	31.41%	32.31%	-0.90%		ALERT		ALERT
Constantia	50006	-28.5	26.27%	27.82%	-1.55%	26.27%	27.82%	-1.55%		ALERT		ALERT
Middletown	50007	-22.0	26.04%	26.84%	-0.80%	26.04%	26.84%	-0.80%		ALERT		ALERT
<b>Total</b>		529.2	27.58%	28.74%	-1.16%	27.58%	28.74%	-1.16%		ALERT		ALERT

\* Alert if variance is above target

[Drill Into Details Here](#)

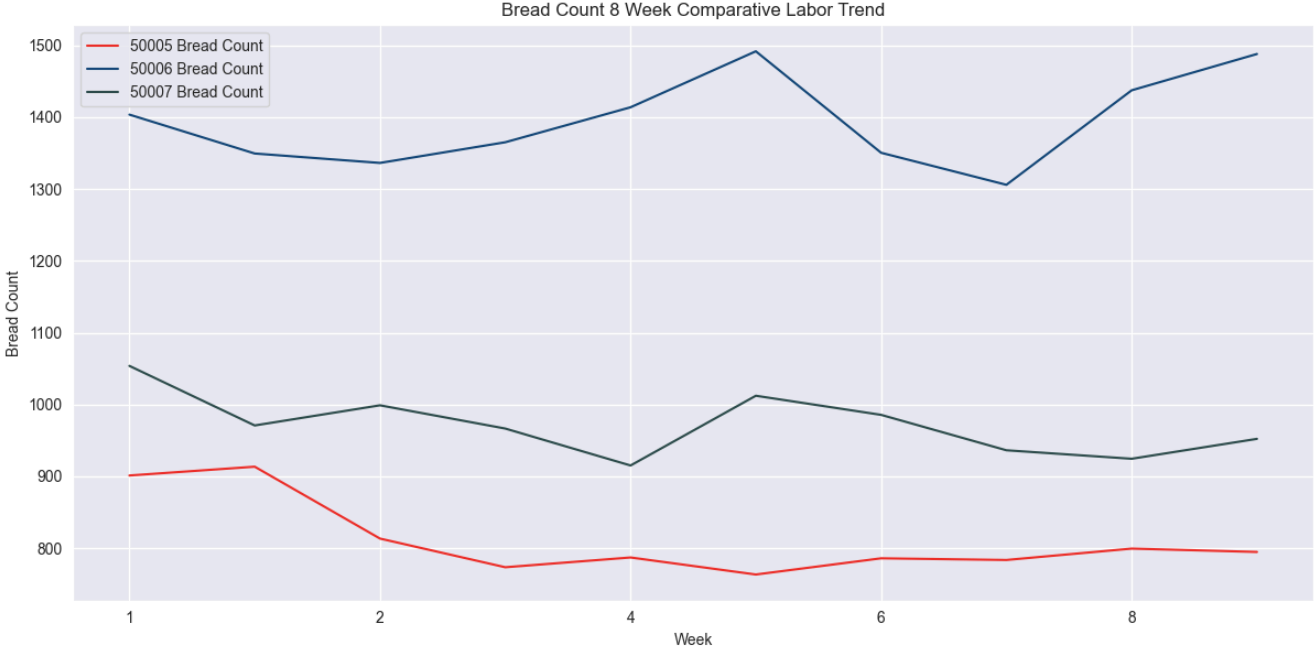
#### Inventory Analysis

Site ID	Current Week End Value	Previous Week End Value	4 Week Average	8 Week Average	4 Week Alert	8 Week Alert
50005	\$10,956	\$22,427	\$14,915	\$15,288		
50006	\$10,379	\$21,800	\$14,539	\$14,822		
50007	\$8,687	\$19,389	\$12,462	\$12,486		
<b>Total</b>	\$30,021	\$63,616	\$41,916	\$42,597		

\* 4 Week Alert if End Value > Previous Week Value for 4 Weeks

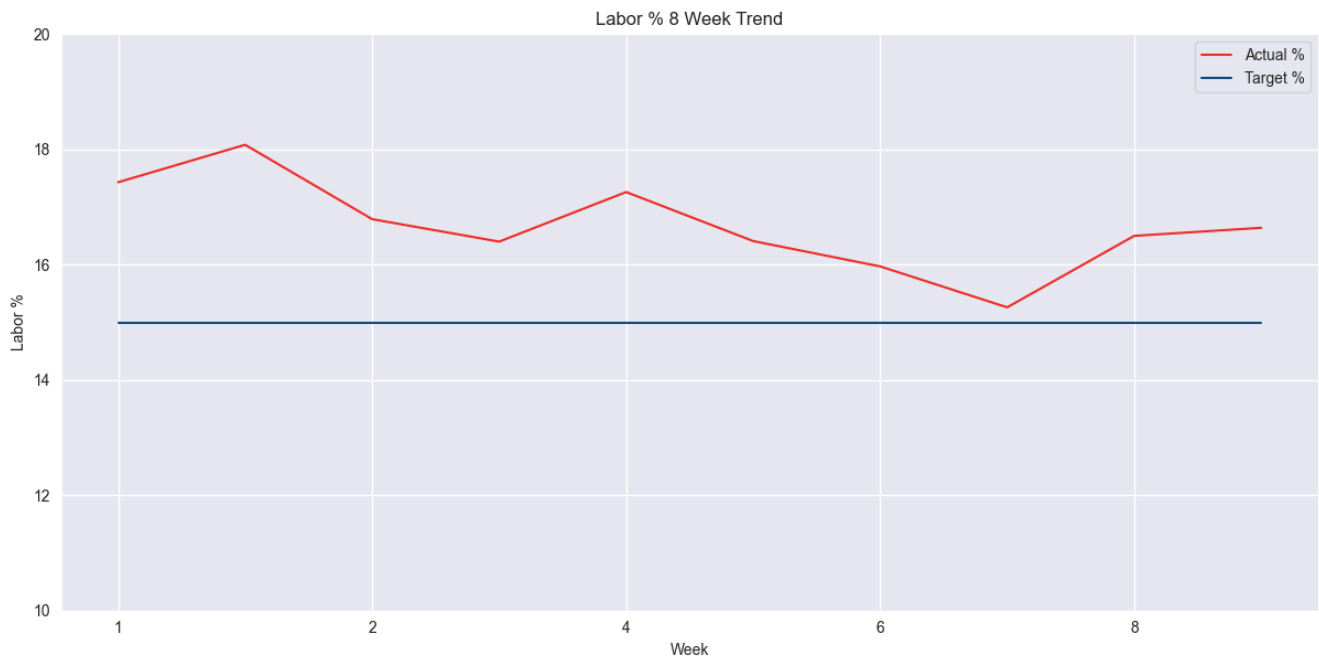
\* 8 Week Alert if End Value > Previous Week Value for 8 Weeks

#### Bread Counts



Site ID	Store Name	REGION	Last Name	Daily Avg CW	Bread Count CW	Bread Count PW	Bread Count PY	Bread Count CP	Bread WOW%	Bread YOY%	Bread Per Labor Hour	Weekly Avg	Average Bread Value	Average Transaction Value	ATV Walk-In	ATV Online	ATV Third-Party
50005	Hanover	East	East	130	913	795	794	1,708	14.9%	15.1%	3.12	812	\$23.09	\$20.07	\$16.81	\$25.42	\$24.43
50007	Middletown	East	East	139	971	952	1,039	1,923	2.0%	-6.5%	3.76	972	\$22.67	\$19.99	\$18.89	\$21.16	\$24.71
50006	Constantia	East	East	193	1,349	1,488	1,261	2,837	-9.3%	7.0%	3.53	1,394	\$26.68	\$21.71	\$18.23	\$22.47	\$25.43
Total		East	East	154	3,234	3,235	3,094	6,469	-0.0%	4.5%	3.47	1,059	\$24.46	\$20.76	\$18.03	\$23.05	\$25.20

Labor



#### Weekly Labor Breakdown

Store Name	Site ID	Actual %	Training %	Target %	Bread Per Labor Hour	Avg Wage	Shift Cost	Actual Hours	Scheduled Hours	Overtime Hours	Scheduled Overtime Hours	Shift Count	Headcount	GM Hours	DM Hours	Manager Peak Hours	Alert
Hanover	50005	19.1%	0.0%	15.0%	3.12	\$13.75	\$4,027	293	306	0	0	107	111	33	0	50%	ALERT
Constantia	50006	17.0%	0.0%	15.0%	3.53	\$16.02	\$6,117	382	361	11	3	152	158	53	0	56%	ALERT
Middletown	50007	18.9%	0.0%	15.0%	3.76	\$16.13	\$4,160	258	247	9	0	84	95	48	0	50%	ALERT
<b>Total</b>		<b>18.1%</b>	<b>0.0%</b>	<b>15.0%</b>	<b>3.47</b>	<b>\$15.34</b>	<b>\$14,304</b>	<b>933</b>	<b>914</b>	<b>20</b>	<b>3</b>	<b>343</b>	<b>364</b>	<b>135</b>	<b>0</b>	<b>52%</b>	<b>ALERT</b>

\* Alert if labor actual % is above labor target %

\* Bread per Labor Hour is calculated as Bread Count Current Week/Hours Worked Current Week.

The jobs included in the calculation are Crew Member, Shift Leader in Training, Shift Leader, and Assistant Manager.

[Drill Into Details Here](#)

#### Total Discounts and Coupons:

10.17% | \$8,046.92

#### Store Promotions

Site ID	Net Sales	Coupon Count	Coupon Amount	Coupon %	Loyalty Count	Loyalty Amount	Loyalty %	Discount Count	Discount Amount	Discount %	Total Count	Total Amount	Total %
50005	\$21,096.62	56	\$647.72	3.07%	83	\$950.79	4.51%	69	\$593.67	2.81%	208.00	\$2,192	10.39%
50006	\$36,001.11	233	\$3,204.28	8.90%	45	\$637.45	1.77%	42	\$318.44	0.88%	320.00	\$4,160	11.56%
50007	\$22,005.71	31	\$332.53	1.51%	87	\$1,022.24	4.65%	38	\$339.81	1.54%	156.00	\$1,695	7.70%
<b>Total</b>	<b>\$79,103.45</b>	<b>320</b>	<b>\$4,184.53</b>	<b>5.29%</b>	<b>215</b>	<b>\$2,610.47</b>	<b>3.30%</b>	<b>149</b>	<b>\$1,251.92</b>	<b>1.58%</b>	<b>684.00</b>	<b>\$8,047</b>	<b>10.17%</b>

#### Coupons

5.29% | \$4,184.53

Top 10 Coupons Used:

Site ID	Count	Amount	Description
50006	216	\$3197.09	Third Party Item Discount
50005	35	\$471.50	Third Party Item Discount
50007	15	\$201.45	Third Party Item Discount
50007	7	\$73.63	Grassroots Cards - Free Sub (No Purch)
50005	6	\$11.20	\$2 of any sub
50006	5	\$9.57	\$2 of any sub
50006	5	\$18.86	25% off
50007	4	\$9.33	\$2 of any sub
50005	3	\$45.35	Grassroots Cards - Free Sub (No Purch)
50005	3	\$31.87	Huddle - B1G1 Reg Sub

Stores Coupons Used:

Site ID	Count	Amount
50005	56	\$647.72
50007	31	\$332.53
50006	233	\$3204.28

Loyalty Coupons

3.30% | \$2,610.47

Top 10 Loyalty Coupons Used:

Site ID	Count	Amount	Description
50005	64	\$764.58	Loyalty E-Program - Free Regular
50007	62	\$700.41	Loyalty E-Program - Free Regular
50006	28	\$357.78	Loyalty E-Program - Free Regular
50006	13	\$271.64	Loyalty E-Program - Free Giant
50005	11	\$86.44	Loyalty E-Program - Free Mini
50007	11	\$220.55	Loyalty E-Program - Free Giant
50007	11	\$93.95	Loyalty E-Program - Free Mini
50005	7	\$133.81	Loyalty E-Program - Free Giant
50006	4	\$35.79	Loyalty E-Program - Free Mini
50007	2	\$18.81	Loyalty - Free Sub (No Purchase)

Stores Loyalty Coupons Used:

Site ID	Count	Amount
50007	87	\$1022.24
50005	83	\$950.79
50006	45	\$637.45

Discounts

1.58% | \$1,251.92

Top 10 Discounts Used:

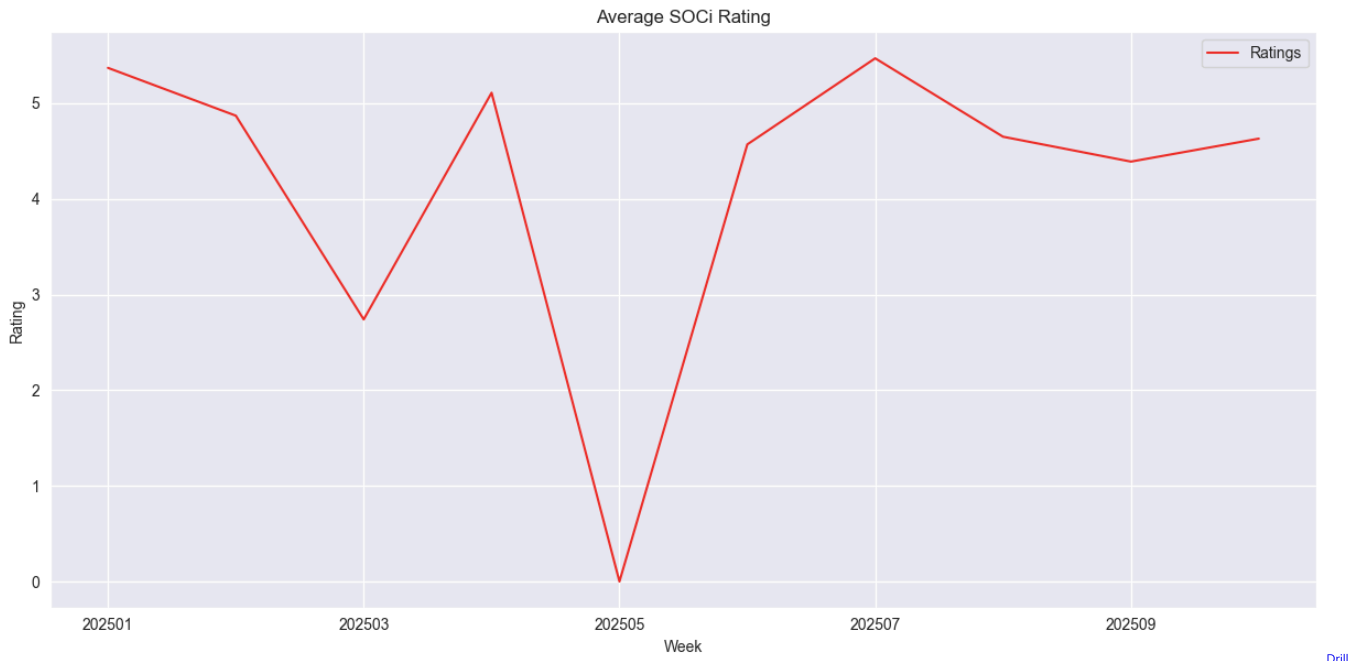
Site ID	Amount	Count	Description
50006	\$272.47	25	Employee Free Sub
50005	\$265.20	24	Employee Free Regular Sub/Wrap/Bowl
50006	\$28.03	15	Employee 50% ITEM Discount
50007	\$143.40	14	Employee Free Sub
50005	\$19.81	13	Family - 15%
50005	\$50.52	12	Employee 50% ITEM Discount
50005	\$49.48	12	Uniform 25%
50007	\$24.54	9	Military
50007	\$77.76	7	Employee Free Regular Sub/Wrap/Bowl
50005	\$267.16	6	Grass Roots

Stores Discounts Used:

Site ID	Count	Amount
50005	69	\$593.67
50006	42	\$318.44
50007	38	\$339.81

Ratings and Reviews

8 Week SOCi Ratings Trend



[Into Details Here](#)

SOCi Review Weekly Breakdown

Site ID	Store Name	CW Ratings	PW Ratings	CW Review Count	PW Review Count	Avg Rating	Alert
50005	Hanover	3.62	4.46	2	1	4.17	ALERT
50006	Constantia			0	0	5.36	
50007	Middletown	5.64	4.33	1	1	4.88	
Total		4.63	4.39	3	2	4.80	

Zenput Completion Rate

Site ID	Store Name	Last Name	Total Tasks	Completed Tasks CW	CW Completion %	Completed Tasks PW	PW Completion %	Completed Tasks CP	CP Completion %
50005	Hanover	East	441	43	9.3%	43	9.5%	87	9.4%
50006	Constantia	East	467	40	9.3%	45	9.5%	86	9.4%
50007	Middletown	East	466	43	8.4%	41	8.9%	84	8.7%
Total		East	1374	127	9.0%	130	9.3%	256	9.2%

8 Week Zenput Completion Rate Trend



Lead Time Changes

Site ID	Store Name	Last Name	Changes CW	Changes PW	12 Week Total Changes
50005	Hanover	East	0	0	0

Site ID	Store Name	Last Name	Changes CW	Changes PW	12 Week Total Changes
50006	Constantia	East	0	0	0
50007	Middletown	East	0	0	0
Total		East	0	0	0

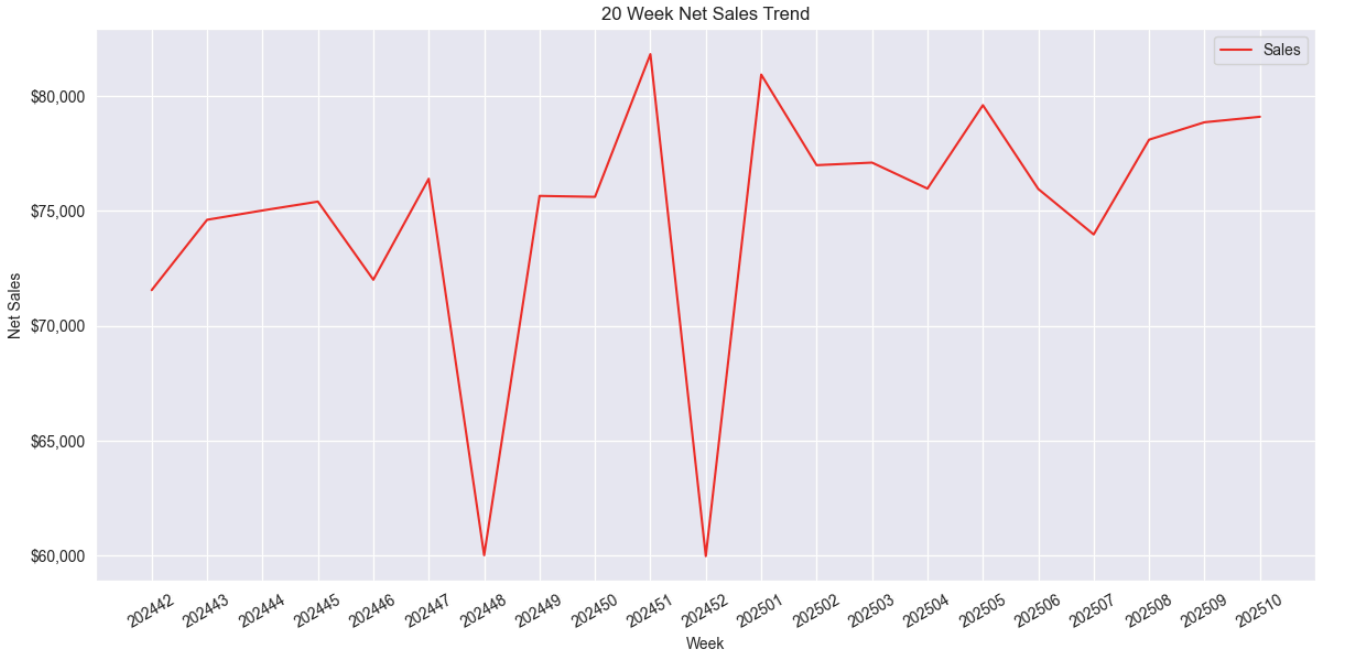
Theft Prevention

Store Name	Site ID	Cancelled Tickets	Refund Value	Refund Count	Approved Disputes Value	CW 3rd Party Refunds	PW 3rd Party Refunds	Payouts	Disc/Coup	Disc/Coup %	Cancelled Alert	Disc/Coup Alert	Refund Alert
Hanover	50005	35	\$363	3	0	0	0	\$0	\$2,192	10.4%		ALERT	ALERT
Constantia	50006	72	\$58	3	0	0	0	\$0	\$4,160	11.6%	ALERT	ALERT	ALERT
Middletown	50007	35	\$9	1	0	0	0	\$0	\$1,695	7.7%			
Total		142	\$431	7	0	0	0	\$0	\$8,047	10.2%		ALERT	ALERT

Third Party Sales

Store Name	Site ID	Ubereats Sales CW	Doordash Sales CW	Grubhub Sales CW	UberEats % CW	DoorDash % CW	GrubHub % CW	Ubereats Sales PW	Doordash Sales PW	Grubhub Sales PW	UberEats % PW	DoorDash % PW	GrubHub % PW	Third Party Alert
Hanover	50005	\$1422.97	\$1933.34	\$210.64	39.9%	54.2%	5.9%	\$1261.70	\$1666.03	\$110.55	41.5%	54.8%	3.6%	None
Constantia	50006	\$10289.77	\$3679.39	\$3656.58	58.4%	20.9%	20.8%	\$11454.34	\$4559.35	\$3606.75	58.4%	23.2%	18.4%	None
Middletown	50007	\$581.83	\$1763.55	\$75.98	24.0%	72.8%	3.1%	\$392.32	\$2143.61	\$157.60	14.6%	79.6%	5.8%	None
Total		\$12294.58	\$7376.29	\$3943.19	52.1%	31.2%	16.7%	\$13108.36	\$8368.99	\$3874.90	51.7%	33.0%	15.3%	None

20 Week Sales Trend



Period To Date Performance

Site ID	Store	Net Sales	GM Hours	Labor Actual	Labor Target	Bread Count	Actual Hours	Bread Per Labor Hour	Avg Wage	COGS Actual	COGS Theoretical	COGS Variance	Avg Daily Net Sales	PY Period Sales	YTD Net Sales	PY YTD Net Sales	YTD Labor %	YTD_BPHL_CW	YTD Cogs Usage Actual	YTD Cogs Variance %
50005	Hanover	\$39,903.98	43.720000	19.7%	15.0%	1,708.33	575.94	2.97	\$13.65	43.0%	38.3%	4.6%	\$2,850.28	\$36,448.61	\$189,402.71	\$162,255.00	21.0%	2.820000	\$72,085.40	2.6%
50006	Constantia	\$74,292.04	48.500000	14.7%	15.0%	2,837.08	664.07	4.27	\$16.42	31.2%	28.8%	2.4%	\$5,306.57	\$72,638.03	\$367,778.10	\$320,968.00	13.0%	4.730000	\$88,120.50	1.6%
50007	Middletown	\$43,772.29	48.830000	19.8%	15.0%	1,923.12	518.22	3.71	\$16.71	34.2%	31.3%	3.0%	\$3,126.59	\$45,355.79	\$219,459.15	\$211,741.00	19.2%	3.650000	\$68,267.37	2.2%
Total		\$157,968.30	141.050000	17.4%	15.0%	6,468.52	1,758.23	3.68	\$15.60	35.0%	31.9%	3.1%	\$3,761.15	\$154,442.43	\$776,639.97	\$694,964.00	16.7%	3.740000	\$228,473.27	2.0%

2025 Quarter Dates

Quarter	Start Date	End Date
1	12-30-2024	04-20-2025
2	04-21-2025	07-13-2025
3	07-14-2025	10-05-2025
4	10-06-2025	12-28-2025

2025 Period Dates

Period	Start Date	End Date
1	12-30-2024	01-26-2025
2	01-27-2025	02-23-2025
3	02-24-2025	03-23-2025
4	03-24-2025	04-20-2025

Period	Start Date	End Date
5	04-21-2025	05-18-2025
6	05-19-2025	06-15-2025
7	06-16-2025	07-13-2025
8	07-14-2025	08-10-2025
9	08-11-2025	09-07-2025
10	09-08-2025	10-05-2025
11	10-06-2025	11-02-2025
12	11-03-2025	11-30-2025
13	12-01-2025	12-28-2025