



Dear Recipient,

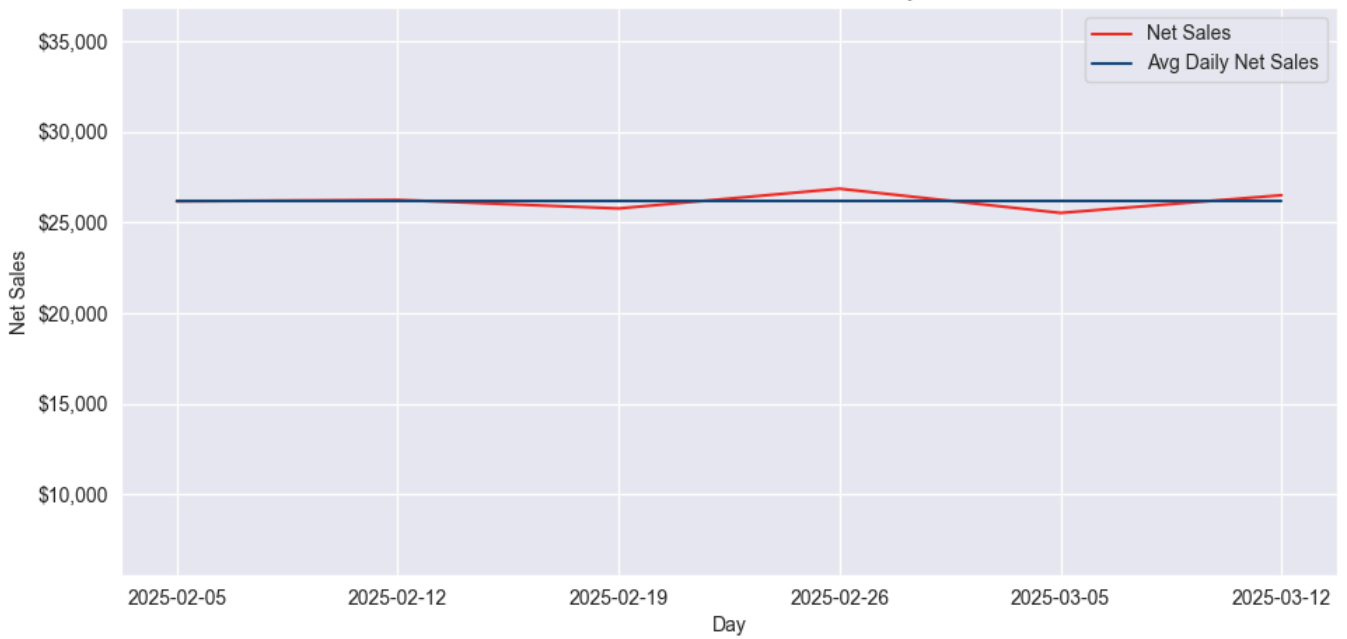
Here is your Previous Days' Performance for Jersey Mikes.

Date: 03-12-2025

Total Net Sales vs. Projected Sales:  
**\$26,501.45**

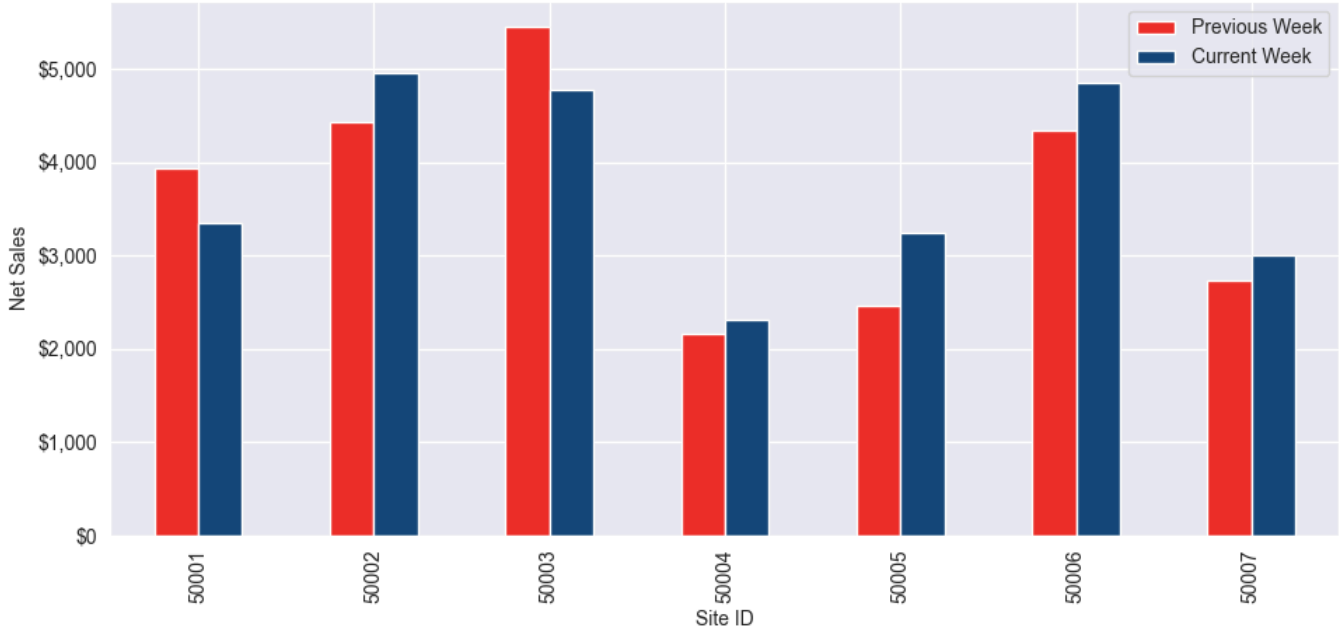
Total Net Sales Week To Date vs. Previous Week To Date:  
**\$82,728.79 | \$79,986.47**

Total Net Sales Trend For Wednesday's



District	Daily Net Sales	Daily Labor Pct	Daily Bread Count	Average Bread Value	Average Transaction Value
Broome	\$7,970.26	10.38%	276	\$28.64	\$23.88
Fulton	\$3,354.99	17.76%	140	\$23.89	\$17.57
Little Silver	\$2,306.33	34.52%	93	\$24.81	\$17.47
Middletown	\$3,238.91	15.34%	126	\$25.73	\$21.45
West Chester	\$4,858.03	17.38%	171	\$28.37	\$21.78
West Ridge	\$4,772.91	6.78%	177	\$27.01	\$19.09
<b>Total</b>	<b>\$26,501.45</b>	<b>16.08%</b>	<b>983</b>	<b>\$26.73</b>	<b>\$20.73</b>

Daily Store Net Sales



Site ID	Daily Net Sales	Daily Labor Pct	Labor Target	Training %	Daily Bread Count	Bread Per Labor Hour	DM Hours	Average Bread Value	Average Transaction Value
50002	\$4,964.64	8.07%	15.00%	0.00%	144	6.40		\$34.59	\$29.20
50007	\$3,005.62	12.68%	15.00%	0.00%	132	4.09		\$22.70	\$18.55
50001	\$3,354.99	17.76%	15.00%	0.00%	140	3.88		\$23.89	\$17.57
50004	\$2,306.33	34.52%	15.00%	0.00%	93	2.12		\$24.81	\$17.47
50005	\$3,238.91	15.34%	15.00%	0.00%	126	3.10		\$25.73	\$21.45
50006	\$4,858.03	17.38%	15.00%	0.00%	171	3.38		\$28.37	\$21.78
50003	\$4,772.91	6.78%	15.00%	0.00%	177	7.03		\$27.01	\$19.09

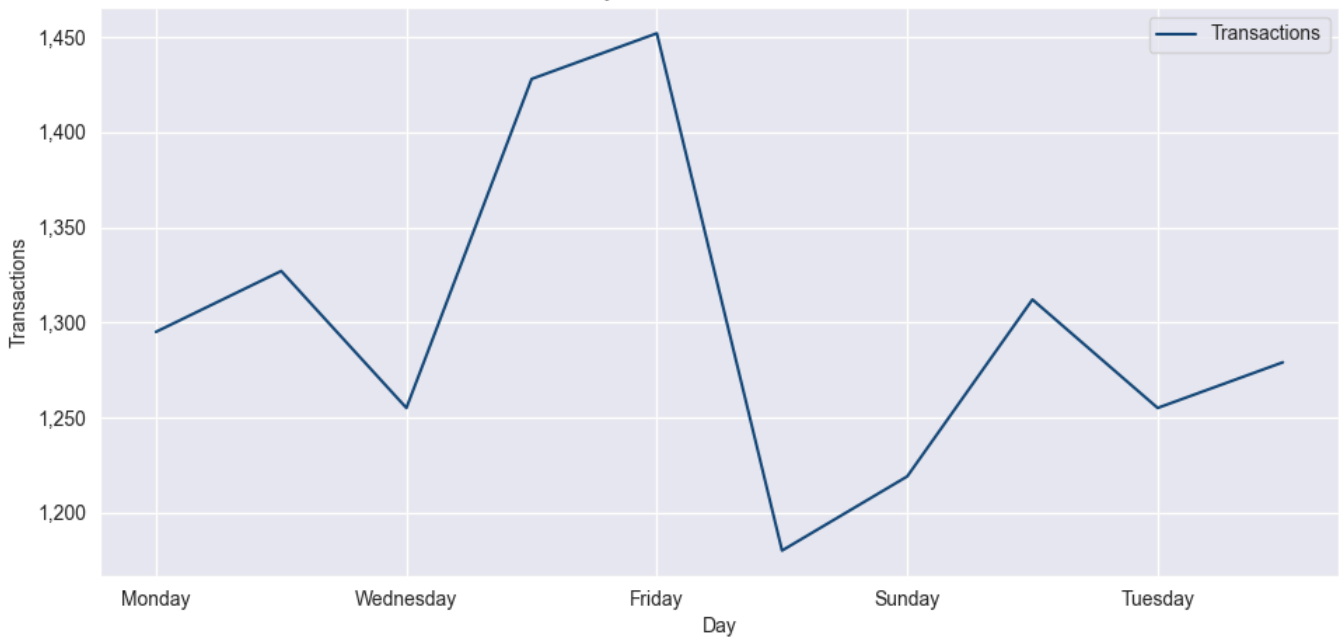
\* Bread per Labor Hour is calculated as Bread Count/Hours Worked.

The jobs included in the calculation are Crew Member, Shift Leader in Training, Shift Leader, and Assistant Manager.

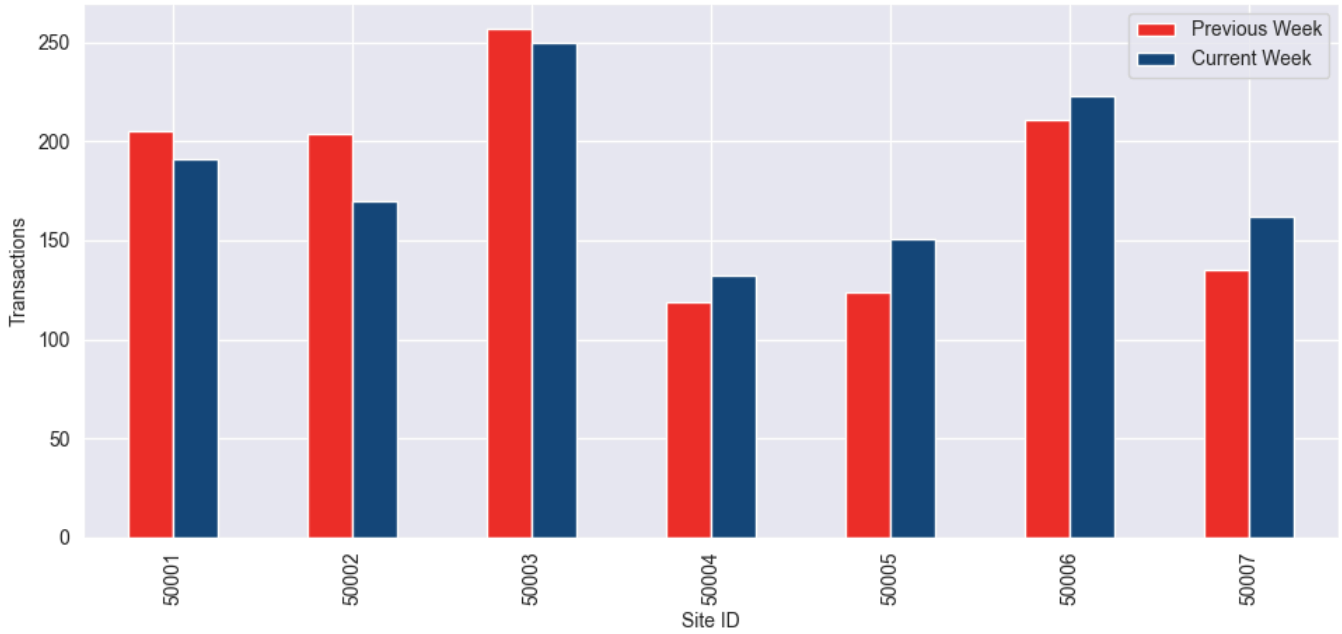
Current Year Sales Performance vs Previous Year Sales:  
3.14%

Total Transactions:  
1279

Daily Total Transactions Trend



### Daily Store Transactions



WTD Labor Rate vs Average Target Labor Rate:  
**14.51% vs 15.00%**

Site ID	Net Sales	Bread Count	Bread Per Labor Hour	Actual %	Target %	Abv/Blw
50002	\$16,769.68	503	6.31	7.89%	15.00%	Below
50007	\$10,886.83	456	4.29	14.66%	15.00%	Below
50001	\$11,227.37	451	4.31	15.36%	15.00%	Above
50004	\$7,725.23	314	2.78	23.59%	15.00%	Above
50005	\$7,827.91	315	2.61	20.36%	15.00%	Above
50006	\$14,769.99	502	3.50	16.57%	15.00%	Above
50003	\$13,521.78	532	5.70	11.05%	15.00%	Below
<b>Total</b>	<b>\$82,728.79</b>	<b>3,075</b>	<b>4.21</b>	<b>14.51%</b>	<b>15.00%</b>	

\* Bread per Labor Hour is calculated as Bread Count/Hours Worked.  
 The jobs included in the calculation are Crew Member, Shift Leader in Training, Shift Leader, and Assistant Manager.  
 Hours Scheduled / Hours Actual / Overage Hours:

Site ID	Scheduled Hours	Actual Hours	Overage Hours
50002	23.7	22.4	-1.3
50007	31.9	32.4	0.5
50001	35.0	36.2	1.2
50004	35.2	43.8	8.6
50005	32.2	40.5	8.4
50006	45.5	50.7	5.2
50003	24.6	25.2	0.5

Refunds:  
**0.10% | \$26.86**

Stores Above 30 Day Average:

Site ID	Value
50007	\$17.37

Cancelled Tickets:  
**38 | \$440.94**

Highest Store's:

Site ID	Tickets	Value
50006	15	\$132.53

Site ID	Tickets	Value
50007	10	\$152.96
50001	6	\$50.44

Total Discounts and Coupons:

0.95% | \$251.63

Store Daily Promotions

Site ID	Net Sales	Coupon Count	Coupon Amount	Coupon %	Loyalty Count	Loyalty Amount	Loyalty %	Discount Count	Discount Amount	Discount %	Total Count	Total Amount	Total %
50001	\$3,354.99	12	\$174.81	5.21%	8	\$96.88	2.89%	2	\$13.51	0.40%	22.00	\$285	8.50%
50007	\$3,005.62	5	\$53.52	1.78%	11	\$128.07	4.26%	7	\$54.53	1.81%	23.00	\$236	7.86%
50003	\$4,772.91	10	\$130.92	2.74%	14	\$143.05	3.00%	5	\$62.43	1.31%	29.00	\$336	7.05%
50004	\$2,306.33	5	\$69.99	3.03%	6	\$70.93	3.08%	0	\$0.00	0.00%	11.00	\$141	6.11%
50005	\$3,238.91	5	\$58.93	1.82%	5	\$60.52	1.87%	11	\$69.02	2.13%	21.00	\$188	5.82%
50006	\$4,858.03	1	\$11.59	0.24%	1	\$8.00	0.16%	5	\$39.28	0.81%	7.00	\$59	1.21%
50002	\$4,964.64	1	\$9.31	0.19%	2	\$31.31	0.63%	3	\$12.86	0.26%	6.00	\$53	1.08%
<b>Total</b>	<b>\$26,501.45</b>	<b>39</b>	<b>\$509.07</b>	<b>1.93%</b>	<b>47</b>	<b>\$538.75</b>	<b>2.05%</b>	<b>33</b>	<b>\$251.63</b>	<b>0.94%</b>	<b>119.00</b>	<b>\$1,299</b>	<b>0.95%</b>

Stores Above 30 Day Average:

Site ID	Value
---------	-------

Coupons

1.93% | \$511.53

Top 10 Coupons Used:

DESCRIPTION	Count	Amount
Third Party Item Discount	27	\$373.94
BOGO on any sub	3	\$34.19
Grassroots Cards - Free Sub (No Purch)	2	\$20.36
Huddle - Free Reg Sub	2	\$35.41
Email Club - Free Combo	1	\$9.02
Flyer - Free Regular Sub	1	\$9.31
Grassroots Cards - BOGO	1	\$12.92
Grassroots Cards - Free Combo	1	\$5.13
Huddle - B1G1 Reg Sub	1	\$8.79

Stores Coupons Used:

SITE_ID	Count	Amount
50004	5	\$69.99
50005	5	\$58.93
50007	5	\$53.52
50001	12	\$174.81
50003	10	\$130.92
50002	1	\$9.31
50006	1	\$11.59

Loyalty Coupons

2.05% | \$542.84

Top 10 Loyalty Coupons Used:

DESCRIPTION	Count	Amount
Loyalty E-Program - Free Regular	37	\$406.41
Loyalty E-Program - Free Giant	6	\$106.40
Loyalty E-Program - Free Mini	3	\$23.18
Loyalty - Free Cookie	1	\$2.76

Stores Loyalty Coupons Used:

SITE_ID	Count	Amount
50003	14	\$143.05
50007	11	\$128.07
50001	8	\$96.88
50004	6	\$70.93
50005	5	\$60.52
50002	2	\$31.31
50006	1	\$8.00

Discounts

0.94% | \$248.85

Top 10 Discounts Used:

DESCRIPTION	Count	Amount
Employee Free Sub	8	\$88.93
Employee 50% ITEM Discount	7	\$13.97
Grass Roots	5	\$105.15
Family - 15%	4	\$6.29
Military	4	\$10.50
Employee Free Regular Sub/Wrap/Bowl	2	\$21.15
Uniform 25%	2	\$4.38
Uniform Discount 15%	1	\$1.27

Stores Discounts Used:

SITE_ID	Count	Amount
50005	11	\$69.02
50007	7	\$54.53
50003	5	\$62.43
50006	5	\$39.28
50002	3	\$12.86
50001	2	\$13.51
50004	0	\$0.00